

Box of Wisdom			
New Concepts			
Beats per Measure			
Quarter note gets the beat			
$\frac{4}{4}$ or $\frac{4}{4}$	- Quarter Note (1 Beat)	- Half Note (2 Beats)	- Whole Note (4 Beats)
Past Concepts	Notes	Rests	Time Signatures
	Top Number – Beats per Measure Bottom Number – Type of Note that gets the beat		
	None Available Yet		
	Music Theory		
None Available Yet			

Time to Show What You Know

Write the counts underneath each note as the examples shown, rests can be written above.

A

ex 1 2 3 4 1 - 3 - 1 2 3 - 1 - 3 4

B

C

ex 1 - - 1 2 - 4

D

E

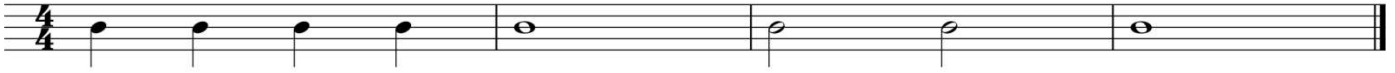
F

Rhythm Sheet # 1

G



H



I



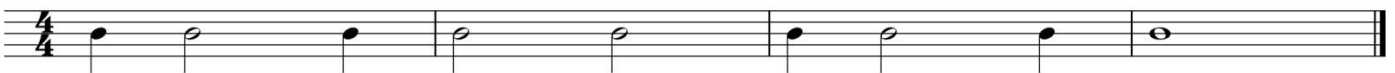
J



K



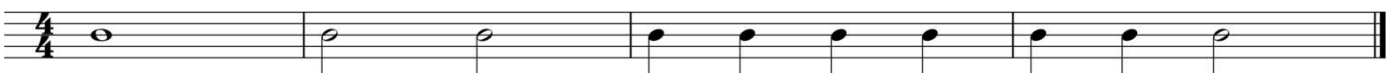
L



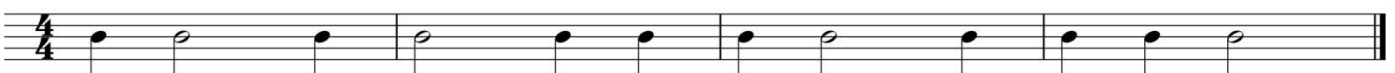
M



N



O



P

